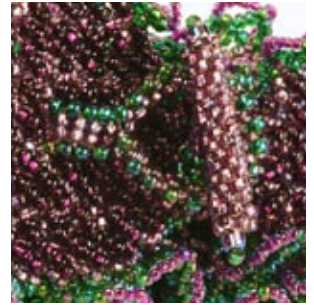


Projects

Ruffled Cabochon Bracelet

Designer: Marilyn Aronson



*Combine five
beadweaving stitches
for a stunning
bracelet*

About ten years ago, I saw some beaded amulet purses and had to have one, but because they were so expensive, I went to a bead store and took private lessons. I made Nicolette Stessin's frog bag in *Bead&Button* #10, using size 8^o seed beads. I finished the purse, and was so proud of it!

Later, my husband and I moved to the Seattle area. I was hooked on beading and visited most of the bead stores. This is the funny part: So here I am with this very unusual, huge amulet bag. I wear it into Beadworld on Roosevelt Way, and I say, rather smugly, "This is the type of work I do, do you have any other projects that I could do like this?" Well, of all the bead stores in the United States Here comes this very charming lady named Nicolette, and she says, "I am the designer of this piece." Oh my gosh! I thought her design was so beautiful that I redid it, and she helped me chose the beads for the short side fringes.

I am now so hooked on beading, that I can't make a living in real estate. I'm always working on some project; and when it's time to go to my office, I keep saying, just another five minutes. Beading has taken over my life, but I love every second of it. My dream is to purchase an existing bead store and make my living around beads.

I'm sure that if you're as hooked on beads as I am, you'll enjoy every second of making this bracelet. Since the project is advanced, I'm leaving color changes up to you and suggesting several variations you may wish to try.



Supplies

- 3 Contrasting colors of [size 11° seed beads](#) (I prefer Japanese), approx. 20g each color (for the bracelet on p. 10, I used matte lime green, silver-lined dark amethyst, and green/blue/purple AB)
- 10g [Size 15° seed beads](#)
- 2 [Seed beads, size 8°](#)
- Oval cabochon, approx. 45 x 38mm – 1¾ x 1½ in. (I used a dyed purple paua shell cab – almost any kind of cab will work – Note: You might want to finish the bracelet and then choose a cabochon)
- Heavy duty Velcro with a sticky back, optional
- [Nymo D](#) or Fireline 6-lb.-test
- [Beading needles](#), size 12
- 2-in. (5cm) Square of Ultrasuede or suede leather
- [E6000 glue](#) or Barge cement
- Beeswax optional

Tools

- [Scissors](#)

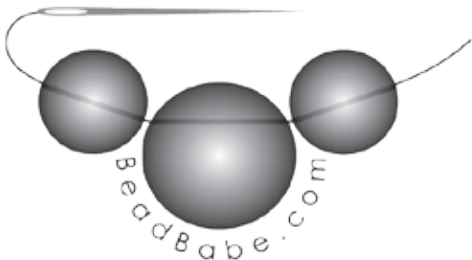
is dry trim the backing close, leaving a bead's width showing around the edge (photo 1).



photo 1

2. Thread a needle with a comfortable length of thread (you'll use it single) and knot the end. Sew from the *front* to the *back* of the suede. You will sew a single row of beads around the edge of the cabochon on the wrong side.
3. Pick up 4 size 11° beads, placing them at the very edge of the suede on the wrong side. Needle through the suede to the right side immediately after the last bead, touching the edge of the cab (photo 2).

Courtesy hot links are provided directly to components currently available from [BeadBabe.com](#). Premium Subscribers receive an extra 10% discount after all applicable volume discounts.



How-to

I used three colors of size 11° seed beads and changed them as I wished. The directions don't tell you which color to use when. Decide what looks good to you and feel free to use as many or as few colors as you wish.

Bezel the cabochon

1. Glue your cabochon to a piece of Ultrasuede using E6000. When the glue



photo 2

4. With the needle touching the cab edge sew back to the back between the second and third beads (photo 3).



photo 3



5. Sew through the last 2 beads (photo 4).



Pick up 4 more beads, and repeat around to form a circle around the cab on the wrong side. The goal is to add 4 beads in every stitch so that the bezel and ruffle come out even, so choose thicker or thinner beads toward the end, as needed. End by sewing through all the beads in the ring (photo 5).



6. With your needle exiting any bead, pick up a bead, skip a bead on the circle, and go through the next bead (photo 6).



Continue around working the first peyote stitch row.

7. After picking up the last bead of the row, step up by sewing through the first bead on the ring and the first peyote bead (photo 7).



8. Continue working peyote stitch rows and guiding the beads to fold over to the right side and up around the edge of the cab (photo 8).



Once the bezel starts rolling over, I usually work one more row, depending on the thickness of the cab. You may need to work a few decreases evenly spaced on the last row to keep the fit snug. To decrease, go through 2 beads without adding a bead between them (photo 9).



9. Now switch to the size 15° beads, to bring the beadwork in snugly around the cab. Work 2 rows. Note: if the bezel starts to buckle, you may have to take out a row of 11°s or work more decreases on the last row of 11°s.

10. I often work a small ruffle on the inner edge of the bezel to add definition: Pick up 3 size 15°s and go through the next protruding 15° on the bezel. Repeat around placing 3 beads between every bead on the innermost row (photo 10).



11. To create the effect of setting the cab into a frame, take the needle back down the bezel to the last size 11° row, and work another row of peyote stitch with 11°s on top of this row. This is also called stitching in the ditch (photo 11). The frame will look best if you work another row on top of the next-to-last 11° row.



12. Zigzag through the two rows of raised beads to pull the frame together (photo 12).



Make a ruffle around the cabochon

The ruffle is made with netting and gains its fullness by having two or three layers. It's such fun to make that you might decide to experiment by making lots of cabs. I particularly enjoy changing color sets and using playful colors.

1. Lay the cab on a table. The bottom edge of beads that shows is where you should start your first ruffle. I like to start my ruffle at the very edge of the cabochon.
2. Weave a new thread into the bezel and come out a low bead on the starting row. String 3 size 11°s, skip a bead, and go through the next low bead (photo 13).



Repeat around until you return to the first set of 3 beads.

3. Step up by going through the low bead where the first set starts and continue through the first 2 of the three beads to exit the middle bead of the set (photo 14).





photo 14

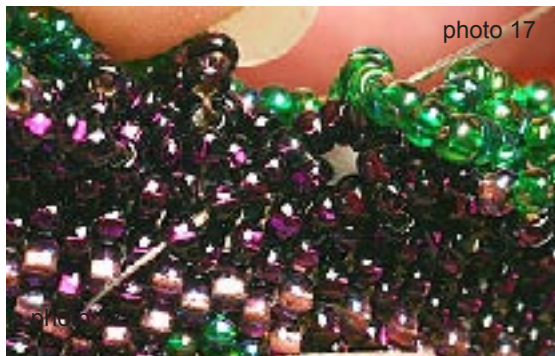


photo 17

4. For the second row, pick up 5 size 11^s on each stitch and go through the middle bead of the 3-bead nets. Step up through the middle bead of the first 3-bead net and the first 3 beads of the first 5-bead net (photo 15).



photo 15

You can make 3 rows as before or stop after the second row. Another effective edge variation is to work an extra row of peyote stitch around the netting edge of the last row, using a contrasting color.

7. If there is room, you might want to add a third row of ruffles. The choice is yours. Note: The cabochon below has two rows of ruffles.

5. The third and last row has 7 beads per stitch. I often work this row with a different color. Another interesting effect is to work the 7-bead row with size 15^e beads, which makes it look almost like a shadow (photo 16).

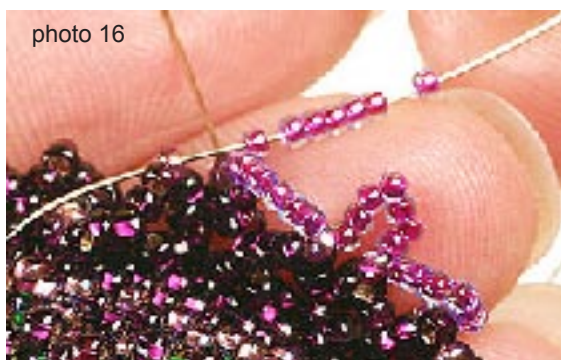


photo 16



6. When you've joined the last 7-bead stitch to the first, weave back down to the bezel and work your needle up a row or two closer to the cabochon to start a second ruffle (photo 17).

Weave a toggle clasp

Work both parts of the toggle with tight tension to keep them firm.

Toggle ring

1. String 36 size 11^e beads, leaving a 4-6-in. (10-15cm) thread tail, and tie the beads into a circle. Sew through the first 2 beads (photo 18).



photo 18



photo 21



2. Work peyote stitch around the ring once to make the third row.
3. Go through a protruding bead on one edge and continue diagonally through 1 bead (a non-protruding bead – photo 19).

5. Weave your thread through the beadwork to exit a top high (protruding) bead, and using a contrasting color, peyote once around through these beads (photo 22).

photo 19



photo 22

4. Pick up a bead (use a different color) and go through the next bead on the non-protruding row – you are “stitching in the ditch” as you add a layer of beads on top of this side of the ring (photo 20).

Toggle bar

1. String 17 beads of the same color that you used for the base of your ring. Work flat peyote until both straight edges have 5 beads (photo 23 and see [“Flat peyote stitch, odd count”](#) in *Beading Basics*).

photo 20



photo 23



Continue all the way around. Then turn the ring over and repeat the process, going through the same beads (photo 21). You now have a ring with two colors on both sides.

2. Then zipper the long sides together to make a tube (photo 24 and see [“Peyote stitch even count”](#) in *Beading Basics* for making a tube bead). Weave the thread in to secure the tube but don't cut off the thread.

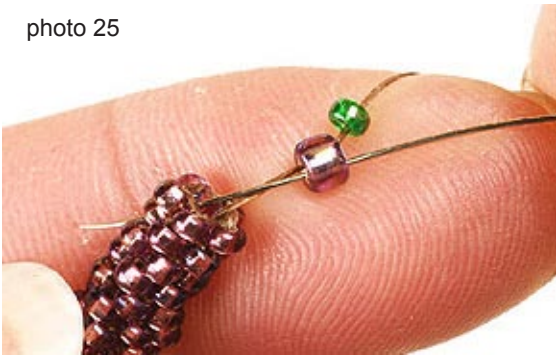




photo 24

3. To finish the ends, weave through the tube to exit one end, string a size 8° and an 11°. Go back through the 8° (photo 25) and secure the thread by weaving into the tube. Repeat this process at the other end of the tube. End the threads securely and trim them.

photo 25



Weave the bracelet

The bracelet band is made with single-needle right-angle weave (see [“Right-angle weave” in Beading Basics](#)). You work the band from one end to the other, tapering each end. Allow ½ in. (1.3cm) on each end for the taper.

Start the bracelet the full width. Each stitch has 2 beads per side and there are 9 stitches across the width of the bracelet.

1. For the first row, pick up 8 beads and tie them into a ring. Go through the first 6 again (figure 1, a-b). Pick up 6 beads and go through the last 2 beads of the first stitch then the first 4 beads of the second (figure 1, b-c). Repeat until you have 9 stitches.

figure 1



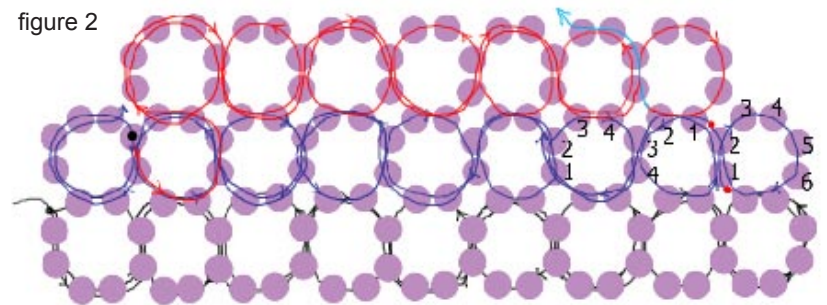
2. Sew through the 6 beads of the last stitch to position your needle to begin the second row (photo 26).

photo 26



3. Pick up 6 beads for the first stitch of the row then 4 beads for each of the remaining stitches as shown on figure 2 with the blue thread lines and numbered beads. Work enough rows to reach an inch (2.5cm) shorter than the desired length of the band. Follow the blue line coming from the black dot on the left-hand side of row 2 for full-width rows.

figure 2



4. To taper the final edge, work the needle around the last row to begin the next row one stitch in from the edge (photo 27 and the red line coming from the black dot on figure 2). Stop this row one stitch short of the end – 7 stitches worked.



photo 27

Work the next row with 5 stitches (see the light blue line at top right of figure 2) and the last row with 3 stitches (photo 28).



photo 28

5. Now work the needle around the last stitch to exit the edge of the middle stitch where you will attach the toggle bar using ladder stitch.
6. Pick up 2 beads and go back through the two beads on the bracelet (photo 29 and see ["Brick stitch" in Beading Basics](#)).



photo 29

Continue through the 2 new beads. Make a 3- to 4-row ladder (photo 30).

7. As you weave back down the ladder, join the end of the ladder to two beads in the middle of the toggle bar (photo 31). Reinforce this join.

photo 30



photo 31



decorate its edges with a contrasting color as follows: Go through the first ladder stitch, pick up a contrast bead, and go through the next ladder stitch (photo 32). Repeat until you reach the bracelet and



photo 32

reinforce this join. You will have added a bead between every other stitch. Fill in the gaps by repeating this process back to the toggle (photo 33); you may have to use a thinner needle since the beads are already full of thread. End the thread securely.

8. Weave the starting tail into the band then

photo 33



attach a new thread and work the three taper rows as in step 4 to complete this end of the bracelet.

9. Work the thread back through the band to the middle stitch 2-4 rows before the taper so you can attach the toggle ring where the ends of the band will meet when the clasp is fastened (photo 34).
10. Work a 3- to 4-row ladder and join it to

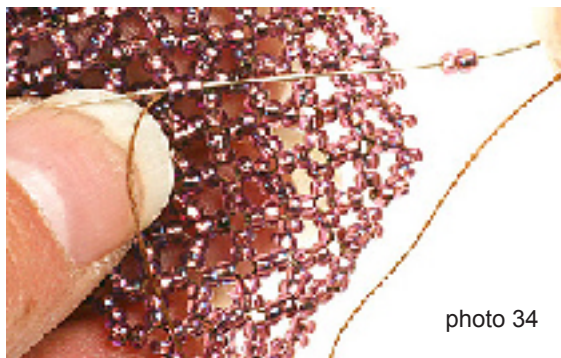


photo 34

the toggle ring. Reinforce the join. Then decorate the ladder as in step 7.

Note: if you prefer, attach both clasp parts to the ends of the band; remember to calculate the length of the clasp into the total length of the bracelet.

Embellish the bracelet



When your cabochon is complete, you can sew it to the center of the bracelet or make it removable (so you can wear different cabochons on the same bracelet band) as follows:

1. Adhere a piece of heavy-duty sticky Velcro cut to the size of the back of the cabochon in the middle of the bracelet. Adhere the matching half of the Velcro piece to the back of the cabochon. (If it doesn't want to stick to the Ultrasuede, use E6000 or Barge cement.)
2. Embellish the uncovered bracelet stitches by sewing 3 beads diagonally across each stitch square as follows:
 - a. Starting at one end, bring the needle left to right through the 2 beads on the end stitch.
 - b. Pick up 3 beads and sew left to right through the 2 beads directly opposite (photo 35).
 - c. Repeat step b until you reach the other

photo 35



edge of this vertical row.

- d. Work your needle around to reach the edge of the next vertical row of stitches (this is a bit tricky on the three tapered rows; you'll have to knot the thread into the beadwork and reverse direction). Turn the band so you are again coming out of the top right-hand corner (photo 36) and embellish down to the other edge.





photo 36

(Note: If both clasp parts are connected to the end rows of the band, the first netting row ends when you reach the ladder at the other end of the band. You'll have to start another netting row on the other side of the ladder.)

4. When you get to the end of a netting row, knot the thread into the beadwork then reverse direction and sew back through the last net to exit the middle bead of the last stitch where you will begin the next row (photo 38).

Continue this way up and down, until you have finished embellishing all the visible squares.

3. Finally, add a netted ruffle (like the ruffle on the edge of the cabochon) to the long edges of the bracelet band, using a contrast color. Start the ruffle on one side of the ladder that connects the toggle bar and work around the edge of the band to the other side of that ladder, skipping an edge bead between each net stitch (photo 37).



photo 38

photo 37



Bracelet made by Marilyn Aronson

